

SENSORY GUIDE

A guide for guests with cognitive differences, including Autism Spectrum Disorder (ASD)



Celebrating an extraordinary milestone, Jumeirah Creekside Hotel proudly secures the prestigious Certified Autism Center™ (CAC) status, bestowed by the revered International Board of Credentialing and Continuing Education Standards (IBCCES). This distinction accentuates the hotel's unwavering dedication to orchestrating a sophisticated, all-encompassing sojourn for its esteemed guests. The CAC designation, a symbol of excellence, reaffirms the hotel's commitment to providing a haven of warmth and inclusivity for autistic and sensory-sensitive guests, and their cherished families.



Sensory Level Summary

1 = low sensory stimulation, 10 = high sensory stimulation*

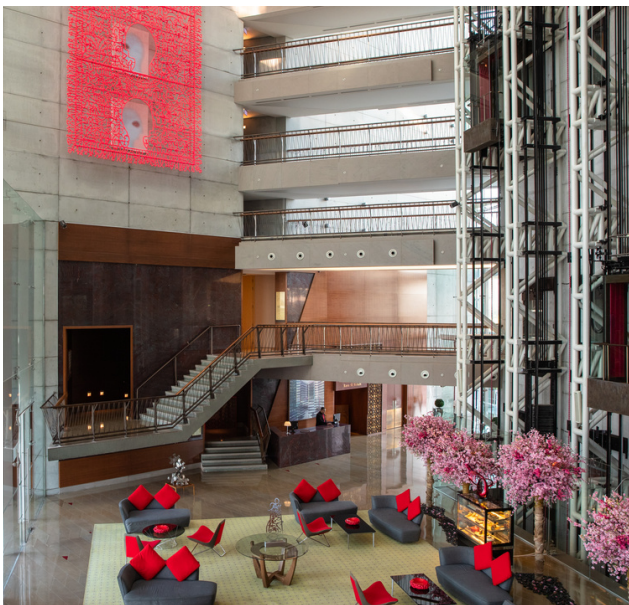
Venue	Touch	Taste	Sound	Sight	Smell
Crimson Gallery	2	2	3	3	2
Main Lobby	1	1	3	3	2
Main Pool	4	3	4	3	2
Nomad Restaurant	3	7	4	4	4
Nomad Sports Bar	2	7	5	3	4
The Aviation Club (Gym)	5	1	5	3	3
Akaru Spa	5	2	2	2	2
The Secret Garden	5	1	4	4	2

CRIMSON GALLERY



TOUCH	TASTE	SOUND	SIGHT	SMELL
2	2	3	3	2
<ul style="list-style-type: none">• Low impact on this sense• There are various textures - textile, wood, leather, smooth, polished and matte, rough surfaces.• Potential for close proximity/shared space with other guests	<ul style="list-style-type: none">• Low impact on this sense• Food and drinks served at tables	<ul style="list-style-type: none">• Potential for close proximity/shared space with other guests• Sounds may echo• Noise from cutlery and dishware may be present	<ul style="list-style-type: none">• Primarily natural light, overhead spotlights• Mostly soft natural colors• Some bright accents and intricate decor	<ul style="list-style-type: none">• Low impact on this sense• Slight smell of food and drinks being served may be present

MAIN LOBBY



TOUCH	TASTE	SOUND	SIGHT	SMELL
1	1	3	3	2
<ul style="list-style-type: none">• Low impact on this sense	<ul style="list-style-type: none">• Low impact on this sense	<ul style="list-style-type: none">• Potential for close proximity/shared space with other guests• Sounds echo• Noise from cutlery and dishware may be present• Slight sound from elevators when ascending/ descending	<ul style="list-style-type: none">• Primarily natural light, overhead spotlights• Mostly muted natural colors• Stimulating accents include various patterns, polished floors, floral arrangements and intricate decor	<ul style="list-style-type: none">• Low impact on this sense

MAIN POOL



TOUCH	TASTE	SOUND	SIGHT	SMELL
4	3	4	3	2
<ul style="list-style-type: none">• Guests can swim and play at their own pace• Various textures to explore - wood, stone, textile, islands of greenery, wicker furniture• Potential for close proximity/shared space with other guests	<ul style="list-style-type: none">• Potential for water to get in mouth• Snacks and drinks served at tables and at the bar	<ul style="list-style-type: none">• Potential for close proximity/shared space with other guests• Sounds from the city, splashing water, or other guests may be present• Background music	<ul style="list-style-type: none">• Outdoors/natural lighting• Natural colors with some bright accents, engaging areas	<ul style="list-style-type: none">• Low impact on this sense• Scent of water or chlorine may be present• Cigarette smell may be present

NOMAD RESTAURANT



TOUCH	TASTE	SOUND	SIGHT	SMELL
3	7	4	4	4
<ul style="list-style-type: none">• Guests can sit at tables and order food• Guests can choose and serve their own meals from the buffet• Potential for close proximity/shared space with other guests	<ul style="list-style-type: none">• Variety of food and drinks served at tables	<ul style="list-style-type: none">• Potential for close proximity/shared space with other guests• Potential for background noise or music• Noise from cutlery and dishware may be present	<ul style="list-style-type: none">• Mix of artificial and natural lighting from different sources• Potential for close proximity/shared space with other guests• Mostly neutral colors with some bright accents, engaging areas and intricate décor	<ul style="list-style-type: none">• Variety of smells from the food items being prepared and served

NOMAD SPORTS BAR



TOUCH	TASTE	SOUND	SIGHT	SMELL
2	7	5	3	4
<ul style="list-style-type: none">• Guests can sit at tables and order food• Potential for close proximity/shared space with other visitors and pets	<ul style="list-style-type: none">• Variety of food and drinks served at tables	<ul style="list-style-type: none">• Potential for close proximity/shared space with other visitors and pets• Potential for background noise• Music is loud• Noise from cutlery and dishware may be present	<ul style="list-style-type: none">• Mix of artificial and natural lighting from different sources• Potential for close proximity/shared space with other visitors	<ul style="list-style-type: none">• Variety of smells from the food items being prepared and served.• Smoking permitted indoors, scent of cigarette smoke may be present.

THE AVIATION CLUB



TOUCH	TASTE	SOUND	SIGHT	SMELL
5	1	5	3	3
<ul style="list-style-type: none">• Guests can exercise at their own pace• Different textures —metal, rubber, glass, plastic• Guests can use sauna and jacuzzi• Potential for close proximity/shared space with other visitors	<ul style="list-style-type: none">• Low impact on this sense	<ul style="list-style-type: none">• Potential for close proximity/shared space with other visitors• Sound from equipment is noticeable• Music volume is high	<ul style="list-style-type: none">• Primarily natural lighting• Potential for close proximity/shared space with other visitors• Tight spaces between equipment areas	<ul style="list-style-type: none">• Slight scent of air freshener• Slight scent of sports equipment

AKARU SPA



TOUCH	TASTE	SOUND	SIGHT	SMELL
5	2	2	2	2
<ul style="list-style-type: none">• Wide range of touch experiences due to variety of treatments for face and body• May be in close proximity to other guests• Various textures to explore	<ul style="list-style-type: none">• Low impact on this sense	<ul style="list-style-type: none">• Potential for close proximity/shared space with other visitors• Relaxing background music is playing	<ul style="list-style-type: none">• Warm, dim light from lamps• Neutral colors	<ul style="list-style-type: none">• Low impact on this sense

THE SECRET GARDEN



TOUCH	TASTE	SOUND	SIGHT	SMELL
5	1	4	4	2
<ul style="list-style-type: none">• Rough stone flooring, grass lawn, islands of greenery.• Guests can walk barefoot, interact with different textures.• On the weekends, additional activities are available.• Kids can jump, run and play at their own pace.	<ul style="list-style-type: none">• Low impact on this sense	<ul style="list-style-type: none">• Potential for close proximity/shared space with other visitors• Splashing water sounds from fountain• Music plays in background• Sounds from birds may be noticeable	<ul style="list-style-type: none">• Outdoors/natural lighting• Some bright colors, engaging areas	<ul style="list-style-type: none">• Low impact on this sense• Scent of water may be present

